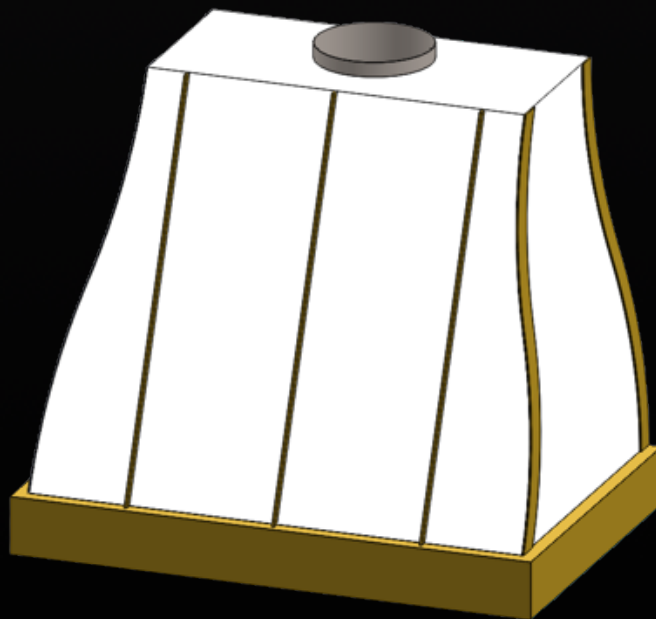


MODERN AIRE

General Installation Guide



7319 Lankershim Blvd
North Hollywood, CA 91605
818-765-9870

www.modernaire.com

CONTENTS

SAFETY PRECAUTIONS.....	3
Installation and Application Considerations.....	4
INSIDE THE BOX.....	5
PRIOR TO INSTALLATION.....	6
Prepare Ductwork.....	6
Prepare Electrical.....	6
Package Removal.....	7
Inspection.....	7
INSTALLATION.....	8
Wall Hood Installation.....	8
Removing the Blower.....	8
Placement.....	8
Securing the Hood to the Wall.....	9
Connecting Duct Work.....	10
Electrical Connection.....	10
Island Hood Installation.....	11
Removing the Blower.....	11
Placement.....	11
Securing the Hood to the Ceiling.....	12
Connecting Duct Work.....	12
Electrical Connection.....	13
Filter Installation.....	14
OPERATION.....	15



SAFETY PRECAUTIONS

Your safety and the safety of others is very important to us. Please read the full set of instructions listed within this pack3et to ensure a safe and successful install.

TO REDUCE THE RISK OF FIRE, ELECTRIC SHOCK, OR INJURY, OBSERVE THE FOLLOWING:

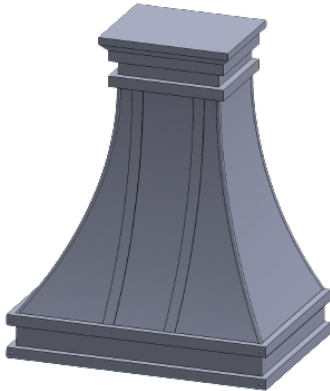
- Installation work and electrical wiring must be done by qualified person(s) in accordance with all applicable codes and standards, including fire-rated construction.
- When cutting or drilling into the wall or ceiling, do not damage electrical wiring and other hidden utilities.
- To reduce the risk of fire and properly exhaust air, be certain to duct air outside. Do not vent exhaust air into spaces within walls or ceilings or into attics, crawl spaces, or garages
- Be certain your appliance is properly installed and grounded by a qualified technician. To guarantee the electrical safety of this appliance, continuity must exist between the appliance and an effective grounding system. It is imperative that this basic safety requirement be met.



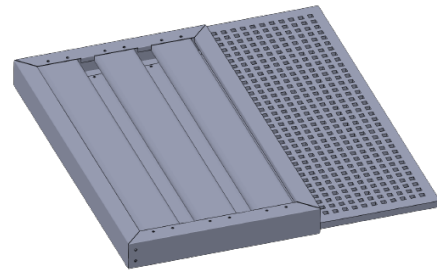
Installation and Application Considerations

- To avoid damaging the ventilation hood, make sure that the connection data(voltage and frequency) on the data plate correspond to the building's power supply before connecting the appliance.
- Do not use a power bar or extension cord to connect the ventilation hood to electricity. These are a fire hazard and do not guarantee the required level of appliance safety.
- To ensure safe operation, only use the ventilation hood after it has been properly installed.
- This ventilation hood may not be used in non-stationary locations(e.g. on a ship).
- Only open the housing as described in this packet. Under no circumstances should any other parts of the housing be opened.
- Tampering with electrical connections or components and mechanical parts is highly dangerous to the user and can cause operation faults.
- This appliance complies with current safety requirements. Improper use of the appliance can lead to personal injury and material damage. Only use the appliance for its intended purpose.
- These range hoods and ventilation products are designed for general ventilating use only. Do not use to exhaust hazardous or explosive materials and vapors.
- Use only smooth rigid ductwork with no more than two 90 degree elbows or equivalent. Do not use flexible duct work.
- Modern Aire recommends installing with gloves to reduce the potential of damaging or tarnishing finishes.

INSIDE THE BOX



Range Hood(model varies)



Baffle/Mesh Filters



Blower**



Paperwork

****Blower is only included if ordered with hood during quoting process. Internal blowers ship installed in the hood while external blowers are within or on the shipping pallet. In some cases, external blowers are shipped prior to the hood itself. Please check with your dealer to verify.**



PRIOR TO INSTALLATION

All Modern Aire hoods are thoroughly packaged to keep them in pristine condition throughout the shipping process. Removing them from their packaging and verifying the condition of the hood is a timely, but necessary process. Modern Aire does not recommend removing the hood from its pallet until you are ready to install.

Prepare Ductwork

Plan where your ductwork will be located. Install the proper sized ductwork and exterior roof, wall cap or exterior blower, depending on where you will be venting your hood outdoors. Use galvanized steel or rigid metal ducting only. Ductwork should already be punched through the ceiling (or wall if the ceiling is not an option) and ready to hook up to the range hood prior to installation. See venting requirements listed on your order for specific duct sizing. Modern Aire does not supply ducting.

For best performance use as few elbows as possible, with no more than two 90° elbows. Include at least 18" straight from the transition piece before using an elbow in the duct and make sure there is at least 24" of straight vent between any elbows.

Use or duct tape or HVAC tape to seal all joints in the vent system. Use caulking to seal exterior openings around the cap. Always use metal HVAC ducting for maximum airflow. Always keep the duct clean to ensure proper airflow.

Prepare Electrical

Power should be a 120 VAC cable from the service panel. All the different power packs use a 10 amp circuit unless more than one blower system is required. The location of the electrical is designated by the model. Please refer to your order for the specific location of the electrical and the requirement. It will be labeled as "120v 10amp" on your CAD.



Package Removal

1. Begin by removing the packing straps, V boards, and top from the exterior of the pallet.
2. Remove the upper interior skeleton of the pallet by removing the screws running vertically into the wooden supports that sit adjacent to the cardboard exterior.
3. Remove the loose foam packaging from atop the hood.
4. Carefully open the grey outer film that wraps the hood. In some cases, it may be necessary to remove the outer cardboard packaging. Do not use anything sharp during this process as you may damage the finish of the hood.
5. Once loose, remove the hood from its packaging and place it on a soft blanket for inspection.
6. Remove the inner wrapping from the unit. Do not use anything sharp during this process as you may damage the finish of the hood.
7. Remove all other items from the pallet listed within the “INSIDE THE BOX” portion of this guide. Be careful not to miss anything as some hoods may ship with additional items if requested by the purchaser.

Inspection

Inspect the hood for any damage, imperfections, or defects before you begin installation. Ensure the design, dimensions, and finishes match what is listed on your order. If any imperfections are discovered, please take photos and contact your dealer immediately. Do not install a damaged hood. Modern Aire is not responsible for any damages or cosmetic issues to the hood once installed.



INSTALLATION

Wall Hood Installation

Removing the Blower

If equipped with an internal blower, the blower must be removed prior to mounting the hood. While lying on it's rear:

1. Pinch both sides of the white 6-pin connector cable to disconnect the wiring from the blower unit(s).
2. Remove the sheet metal screws and loosen, but do not remove, the nuts with an 11/32" socket.
3. Push the blower(s) forward and pull outwards.
4. If the hood contains a duct cover, remove the collar plate to gain additional access to the interior of the unit.
5. If the hood is taller than 30", it will, in most cases, contain a deck plate that the blowers attach to. This piece should be removed with a standard Phillips head screwdriver to gain additional access to the interior of the unit for mounting purposes.

Placement

Modern Aire requires each hood to be mounted no lower than 30" from the top of the cooking surface and recommends a maximum of 36" between the top of the cooking surface and the bottom of hood.

1. Verify the duct location and the electrical prior to continuing with the install.
2. Measure where the vertical centerline is.



3. Mark a level horizontal line matching the hood's overall width at the preferred mounting height centering it on your previously drawn vertical centerline.
4. Mark the location of the studs in the wall. They're typically placed about 16" apart. The hood must be mounted to as many studs as are available.
5. On the back side of the hood, mark the location of the studs.
6. Mark points to drill through the rear of the hood at the highest and lowest points available with multiple contact points between. Each drill point should be no more than 12" apart from one another vertically.
7. Use a 1/4" drill bit to drill the holes into the hood at the marked locations.

Securing the Hood to the Wall

Do not attempt to secure the hood to the wall alone. Larger hoods will require more installers.

1. Push or slide the hood into the correct mounting position based on your previously marked horizontal line and vertical centerline. Do not attempt this without the proper equipment.
2. Ensure the hood is center and level before proceeding with installation.
3. Lag the hood through your pre drilled holes into the studs in the wall. Modern Aire recommends using #10 2" long hex screws with fender washers.
4. If a duct cover is included, lag the flanging on the duct cover to the wall to hold it flush with the wall and reinstall the collar plate.



Connecting Duct Work

Modern Aire's supplied duct collar should fit snugly into the previously run ductwork on site. The duct work should be secured to the collar with metal tape on either the exterior or interior of the ducting. Do not use regular duct tape.

Electrical Connection

Modern Aire hoods are set up to be hardwired into the home. Only allow a qualified electrician to set up the wiring to your hood. Ensure the power to the area of installation is off.

1. Open the junction box on the interior of the hood.
2. Locate the ends of the colored wires and connect them to the home per the following information:
 - Black - Power into hood
 - White - Neutral
 - Green - Ground
 - Red - Switch Leg (included only if hood is prepped for an external blower)
3. Close the junction box and secure it with the provided screws.
4. Reconnect the blower(s) removed earlier in the process by sliding them into place, tightening the provided nuts, and securing the white 6-pin connector(s).
5. Turn the power to the space on and test the switches to ensure everything is operating appropriately per the following section.



Island Hood Installation

Removing the Blower

If equipped with an internal blower, the blower must be removed prior to mounting the hood. While lying on it's rear:

1. Pinch both sides of the white 6-pin connector cable to disconnect the wiring from the blower unit(s).
2. Remove the sheet metal screws and loosen, but do not remove, the nuts with an 11/32" socket.
3. Push the blower(s) forward and pull outwards.
4. If the hood contains a duct cover, remove the collar plate to gain additional access to the interior of the unit.
5. If the hood is taller than 30", it will, in most cases, contain a deck plate that the blowers attach to. This piece should be removed with a standard Phillips head screwdriver to gain additional access to the interior of the unit for mounting purposes.

Placement

Modern Aire requires each hood to be mounted no lower than 30" from the top of the cooking surface and recommends a maximum of 36" between the top of the cooking surface and the bottom of hood.

1. Verify the duct location and the electrical prior to continuing with the install.
2. Each ceiling mounted hood will be equipped with one of a few types of tops:
 - Closed Top
 - Open Top with Inward Flanging
 - Open Top with Outward Flanging



3. Mark the location of the framing/backing on the ceiling that the hood is intended to mount to.
4. Mark points to drill through the top/flanging of the hood at the farthest points of each edge with multiple contact points between. Each drill point should be no more than 12" apart from one another.
5. Use a 1/4" drill bit to drill the holes into the hood at the marked locations.

Securing the Hood to the Ceiling

Do not attempt to secure the hood to the ceiling alone. Larger hoods will require more installers.

1. Push the hood up into the correct mounting position based on your previously marked framing/backing locations. Do not attempt this without the proper equipment.
2. Ensure the hood is center and level before proceeding with installation.
3. Lag the hood through your pre drilled holes into the framing/backing in the ceiling. Modern Aire recommends using #10 2" long hex screws with fender washers.

Connecting Duct Work

Modern Aire's supplied duct collar should fit snugly into the previously run ductwork on site. The duct work should be secured to the collar with metal tape on either the exterior or interior of the ducting. Do not use regular duct tape.



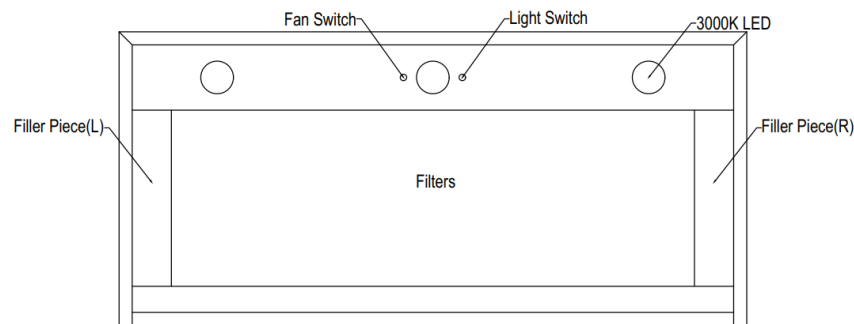
Electrical Connection

Modern Aire hoods are set up to be hardwired into the home. Only allow a qualified electrician to set up the wiring to your hood. Ensure the power to the area of installation is off.

1. Open the junction box on the interior of the hood.
2. Locate the ends of the colored wires and connect them to the home per the following information:
 - Black - Power into Hood
 - White - Neutral
 - Green - Ground
 - Red - Switch Leg (included only if hood is prepped for an external blower)
3. Close the junction box and secure it with the provided screws.
4. Reconnect the blower(s) removed earlier in the process by sliding them into place, tightening the provided nuts, and securing the white 6-pin connector(s).
5. Turn the power to the space on and test the switches to ensure everything is operating appropriately per the following section.

Filter Installation

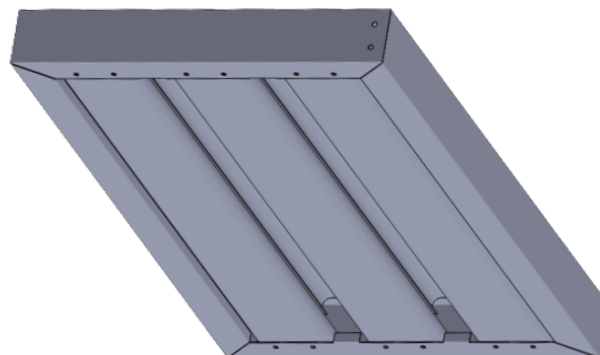
If equipped with baffle filters, locate your L-shaped filler pieces. In rare cases, L-shaped filler pieces are not required and will not be shipped with the hood. Filler pieces are only included to fill in the additional space not covered by standard Modern Aire baffle filters. Insert each filler piece into the far left/right side of your Modern Aire hood. The open side of the filler piece should face the side of the hood so that the side of the filter rests against the side of the filler piece once installed.



Install your baffle or mesh filters as follows:

1. Angle the front of the filter upwards and insert it into the canopy of the hood.
2. Bring the rear edge of the filter upwards until it clears the rear filter bar.
3. Slide the filter backwards and slowly bring the front down so that it sits upon the front filter bar. It should securely sit within the hood.

NOTE: Mesh filters are fully reversible. Baffle filters are recommended to sit per the following image with 2 visible gaps between baffles when viewed from the underside.





OPERATION

Never put your hands into the fan housing while the fan is operating.

This appliance is not to be used by persons(including children) with reduced physical, sensory or mental capabilities, or lack of experience and knowledge, unless they have been given supervision or instruction concerning the use of the appliance by a personal responsible for their safety. Children should be supervised to ensure they do not play with the appliance.

To turn the blower on, turn the knob labeled “FAN” counter-clockwise until it clicks. The blower will begin on high and continuing to turn the knob counter-clockwise will decrease the fan speed to the minimum factory setting.

To turn the blower off, turn the knob labeled “FAN” clockwise until it clicks. Do not continue to turn clockwise past this click.

To turn the LED lights on, turn the knob labeled “LIGHT” counter-clockwise until it clicks. The lights will begin on low and continuing to turn the knob counter-clockwise will increase the light intensity to the maximum factory setting.

To turn the LED lights off, turn the knob labeled “LIGHT” clockwise until it clicks. Do not continue to turn clockwise past this click.

If the blower does not have continuously variable speed functionality, check the ductwork as there is most likely incorrectly sized ducting in the home or an obstruction of some sort causing a reduction in airflow.